

Get involved

SUPEERA invites all organisations supporting the execution of the SET-Plan and the Clean Energy Transition to express interest in contributing to the project and share their success stories.



www.supeera.eu
info@supeera.eu
[#supeera](https://twitter.com/supeera)

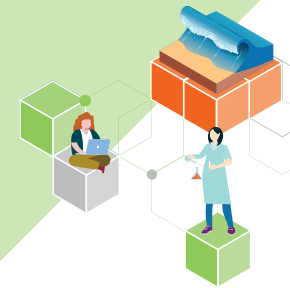


This project has received funding from the European Union's Horizon 2020 research and innovation programme under grant agreement No 949125.



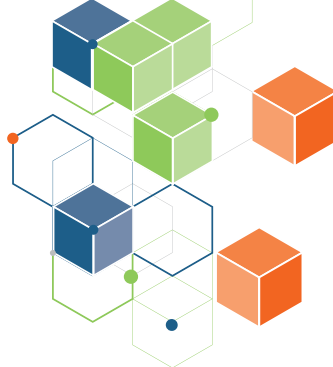
SUPport to the coordination of national research and innovation programmes in areas of activity of the European Energy Research Alliance

**Supporting the SET-Plan
and the Clean Energy Transition**



SUPEERA

in a nutshell



Making Europe the first climate-neutral continent in the world requires to accelerate the energy transition and maximise its impact. Research and Innovation (R&I) in the field of low carbon technologies will determine the speed of the transition.

The Strategic Energy Technology Plan (SET-Plan) was created to boost research and innovation of energy technologies. The vision and overarching objective of SUPEERA is to strengthen European cooperation in research and innovation to realise the objectives of the SET-Plan in the broader perspective of the Clean Energy Transition.

SUPEERA OBJECTIVES

- Facilitate the coordination of the research community in support of the execution of the SET-Plan towards the Clean Energy Transition
- Accelerate innovation by the industry
- Provide recommendations on R&I priorities and policy frameworks
- Support and promote the SET-Plan and the Clean Energy Transition



SUPEERA ACTIONS

EERA and the third parties linked to SUPEERA strive to **connect the dots** by:

- Supporting the energy research organisations involved in the SET-Plan
- Encouraging a stronger engagement of the EU-13 countries
- Improving the exchange of information and making recommendations for joint actions
- Helping accelerate the uptake of new technologies by industry
- Supporting the mobilisation of the research community and other stakeholders towards the SET-Plan and the Clean Energy Transition

SUPEERA MAIN BENEFICIARY

The European Energy Research Alliance (EERA) is today the largest energy research community in Europe. As the formal research pillar of the SET-Plan, EERA is strategically positioned to optimize and facilitate the convergence of national research efforts, not only towards the priorities of the SET-Plan, but also to address the challenges pertaining to the Clean Energy Transition.

